

AUTOMOTIVE AFTERMARKET



# The better connection guaranteed



[norma-aftermarket.com](http://norma-aftermarket.com)





# There's no substitute for quality. Choose the Original Equipment Manufacturer.

Professionals know that original vehicle parts make the difference, whether in terms of precision fit or greater reliability in use. With the innovative joining solutions from NORMA Group, garages profit from original equipment quality, which is used in 90% of all European cars. As a global market and technology leader in engineered joining technology and OE supplier to the automotive industry, we know what matters: superior quality in every detail.

Quality is based on experience and the perfect interaction of all individual components. At NORMA Group, we firmly believe that quality knows no compromise, because every component is mission critical.

Our highly qualified team of development and process engineers is regularly involved right from the initial stages in the development of new vehicle models and engine generations. Prototypes and standard products are tested in our own certified, state-of-the-art test laboratories, in conformity with all relevant regulatory standards.

In over 70 years, NORMA Group has won the confidence of over 10,000 customers in more than 100 countries. Dare to compare and see for yourself in which fields NORMA Group can support your business.

## Technology that connects

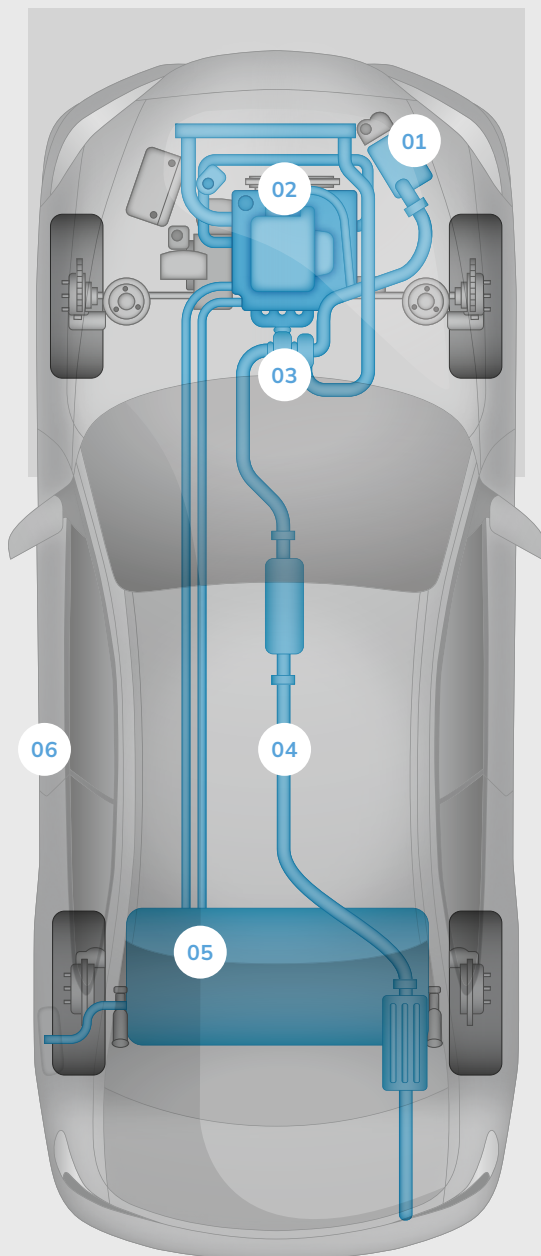
**NORMA®** is the gold standard in many industries, offering high-quality joining and fixing solutions that set the benchmark for performance and reliability. While our TORRO® worm drive hose clamp is one of the most recognized products, many of our solutions—from clamps to couplings and fluid systems—are essential in various applications. Especially in the automotive industry, NORMA products can be found in almost every European vehicle, making them a key part of the automotive aftermarket and a trusted name in garages worldwide.



**ABA** is the flagship brand of the NORMA Group, with an impressive history of more than 120 years of know-how. Following the belief that quality saves lives, their high-class steel clamps, clips, ties and tools from Sweden connect pipes, process and hydraulic lines all over the world. With its iconic blue housing as a distinguishing feature, ABA clamps stand for quality, reliability and safety.



# 100% quality for virtually every vehicle application



## **01. Air Intake & Induction**

When it comes to air intake and induction, we offer lightweight connectors that minimize potential leakage and are easy to install—even under challenging circumstances, such as a narrow engine compartment.



## **02. Cooling Systems**

To ensure complete tightness at great temperature ranges, our products have to be thermally flexible. For example, TORRO® WF offers an automatic re-tensioning effect even if temperatures fluctuate intensively.



## **03. Turbocharger Installations**

With increasing engine performance, temperatures rise. Our V-band clamps can be used for gas temperatures of up to 1,000 °C—and they still keep the system leakage-free during extreme temperature fluctuations.



## **04. Exhaust Systems**

Reducing pollutants in the exhaust system and complying with emission values is more important than ever. That's why we are constantly working on finding greener solutions.



## **05. Fuel & Oil Systems**

Fuel and oil pipes need to be leakproof—for the sake of the environment and for better efficiency. Our connectors are made of resistant material to supply fuel to the engine cleanly and to keep pollution to a minimum.



## **06. Fixing & Retaining**

Pipes, hoses or cables—no matter what you want to fix or retain: NORMA Group products provide a damage-free solution, offering you the highest quality and material durability.



**TORRO®** **NORMA**

The perfect all-rounder according to DIN 3017. Fits the complete range of diameters and various applications. **Assortment available.**

**TORRO® WF** **NORMA**

With integrated spring for long-term sealing over a wide temperature range. **Assortment available.**

**Constant Torque Standard** **ABA**

Belleville spring ensures sealing over a wide temperature range.

**Standard Hi-Torque** **ABA**

The world's strongest screw thread clamp.

**Original** **ABA**

Premium quality with ultra-strong one-piece housing for high clamping torque.

**Nova** **ABA**

Versatile clamp, which provides a short housing saddle for optimum contact pressure. **Assortment available.**

**FBS** **NORMA**

Springband clamp according to DIN 3021 that is easy to install and suitable for sealing over a wide temperature range. **Assortment available.**

**COBRA** **NORMA**

One-piece hose clamp that is quick and simple to install even in tight spaces. **Assortment available.**

**Mini** **ABA**

Small bolted clamp for thin wall hoses. **Assortment available.**

**CC** **NORMA**

Charged air clamp with high clamping force for high pressure and extreme temperature changes.

**S/SP** **NORMA**

Single and 2-bolt robust clamp according to DIN 3016, 3017 with high clamping force.

**GBS M** **NORMA**

Heavy-duty bolted clamp with mechanically locked closure.

**CV Boot Clamp** **NORMA**

Universal clamp applicable for several diameters. Gives flexibility to mount different sizes of rubber boot.

**EarClip Pro<sup>360</sup>** **NORMA**

360° uniform compression sealing.

**ARS** **NORMA**

Very low weight and good sealing performance, with easy single-bolt locking assembly.

**EuroCoupler** **NORMA**

Low weight coupler with top sealing performance. Easy repair solution for butt joint pipes without need of slots.

**RS/DIN** **NORMA**

Alternative to the ARS clamp. They also connect pipes safely inserted into each other.



## V-Band Clamps

**V-QRC** **NORMA**

Profile clamp with quick release for rapid assembly and disassembly.

**VPP Bridge** **NORMA**

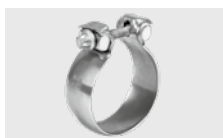
Profile clamp designed for extreme gas temperatures over 1,000 °C.

**AccuSeal** **NORMA**

Best choice on the market due to high clamp load, low space requirements and best leakage sealing for slip joint design.

**SEC** **NORMA**

Pipe angle adjustable, low weight and best sealing performance without need of gasket.

**EasySeal** **NORMA**

Fast, easy and accurate installation. Perfect for service repairs.

**V-STC** **NORMA**

The STC closure has low friction losses thanks to high-strength, precision-engineered components made from quality materials.



### Hose Connector



Secure, reliable, low-weight connection of hoses and plastic tubes carrying media of any kind.  
Assortment available.



### V2



Quick assembly and compact design. Connects tubes and hoses with plastic and metal spigots. Designed for air supply lines.



# More than 27,000 vehicle parts for all connecting needs

### PS3



Top sealing performance and robust design according to VDA standard. Biggest range on the market. Designed for cooling water lines.



### Spigot for PS3



Reliable connection of cooling water and heating hoses.



### S



High safety performance, designed according to SAE standard. Designed for fuel supply lines.



### Single-Lock



Easy and secure assembly and disassembly with Single-Lock feature according to SAE standard. Transports fuel and AdBlue®\*.



### Fluid Lines



Fluid systems for transporting or ventilation of different media in various vehicle applications.



### RSGU



Fixes pipes, hoses, tubes, cables and harnesses securely. Easy installation and proven quality.



### Cable Ties



Fasten cables quickly and safely.



### FBS Assortment



Assortment contains 75 springband hose clamps in 10 different sizes for multiple hose-spigot applications.



### Fuel Line Repair Kit



One-stop solution kit with 50 parts to repair up to 8 defective fuel lines in 5 minutes.



### TORRO® WF Assortment



A one-stop solution with 50 items to help find the right size clamp for most applications.



### COBRA Assortment



The most common COBRA clamp sizes at hand for precise installation, even in the tightest spaces. Contains 500 pieces.



### Mini Assortment



Essential ABA Mini Clamp Assortment with 120 pieces and Flexidriver. Particularly suitable for use on small, thin-walled hoses.



### TORRO® 9 Assortment



The well-organized TORRO® assortment box with 50 pieces provides a convenient way to keep a full range of clamp sizes at hand.



### TORRO® Display



Display with a total of 100 TORRO® clamps in different sizes. The right clamp at hand for almost every automotive application.



### Nova/Mini Display



Wall dispenser with a total of 244 clamps: ABA Nova DIN 9 mm and ABA Mini and 1 Flexidriver. The highly versatile and durable solution.



\*AdBlue® is a registered trademark of the German Association of the Automotive Industry (VDA).

# Discover our premium joining solutions for the Automotive Aftermarket

Trust NORMA Group as the reliable original equipment manufacturer and development partner for the automotive industry and vehicle aftermarket parts. Our top brands, NORMA® and ABA, represent quality, safety, and dependability worldwide, setting industry standards for innovative joining solutions.



Hose  
Clamps



V-Band  
Clamps



Exhaust Clamps &  
Couplings



Fluid Systems &  
Quick Connectors



Fixing &  
Retaining

# Rely on best OE quality available at leading distributors

---

Using our products means using “the original”, because we are the Original Equipment Manufacturer for the majority of automotive manufacturers. Regardless of whether it is a car or a truck, you will find different tailor-made solutions. Garages benefit from a local stock of our original quality vehicle parts at their preferred distributors for a fast response at any time. Ask your distributor—they can advise you.

## Benefits for garages



**Easy Parts Identification:** Our products in OEM quality are cross-referenced in TecDoc with the relevant vehicles and OE numbers. This makes parts identification particularly easy.



**Excellent parts availability:** Our products are listed at all leading distributors for fast delivery and can easily be found in their programs.



**Broad product portfolio:** With over 27,000 products we offer a solution for almost every connection or joining repair in the majority of car models.



**Leading OE quality:** Every product of our aftermarket portfolio meets the strict quality standards of the automotive industry.



**Good cost to value ratio:** Reliable spare parts at a fair price ensure long-lasting repairs and satisfied customers.



**Perfect fit:** Thanks to the OE quality of our products, a precise fit during assembly is always guaranteed. This makes everyday workshop life easier and ensures satisfied customers.



**Smart handling:** All our products are not only designed for excellent performance, but also for ease of installation. Additionally, we offer kits for specific repair jobs to save you time and effort.

**WE ARE  
A TRUSTED  
PARTNER**



# Profit from easy, flexible ordering locally and throughout Europe

NORMA Group is the strong partner for distributors to provide garages with reliable spare parts of outstanding quality. All our products are available worldwide, while our local customer service teams support you right where you are, ensuring easy communication and

quick response times. In addition, our experienced and competent team is always at your side. As a customer of NORMA Group you have a dedicated contact person to quickly answer your questions or give advice on specific topics.

## Benefits for distributors



- ✓ **Broad portfolio:** We offer one of the broadest portfolios of joining solutions, enabling you to reduce the number of your suppliers.
- ✓ **OE supplier:** Our reliable and consistent quality parts minimize, if not eliminate, complaints and returns from your customers.
- ✓ **TecDoc Premier Data Supplier:** Every product can easily be found in TecDoc and its product information conveniently be integrated into your systems.
- ✓ **Professional order management:** You can order from our order management teams using traditional means or via an optional EDI interface for fast and easy ordering.
- ✓ **Flexible distribution centers:** On request, our logistics teams can support you with customized labeling or packaging based on your branding.
- ✓ **Experienced instructors & staff:** Your dedicated NORMA Group expert team consults you on all connecting and joining topics. Additionally, our instructors support your teams with tailor-made training offers.
- ✓ **Data support:** We can provide you comprehensive product data such as descriptions, technical data and product images for your ERP or order system integration.
- ✓ **Marketing material:** To promote our products to your customer you have access to marketing and promotion materials as well as our exclusive marketing support.

## Reliable and fast shipments from local distribution centers

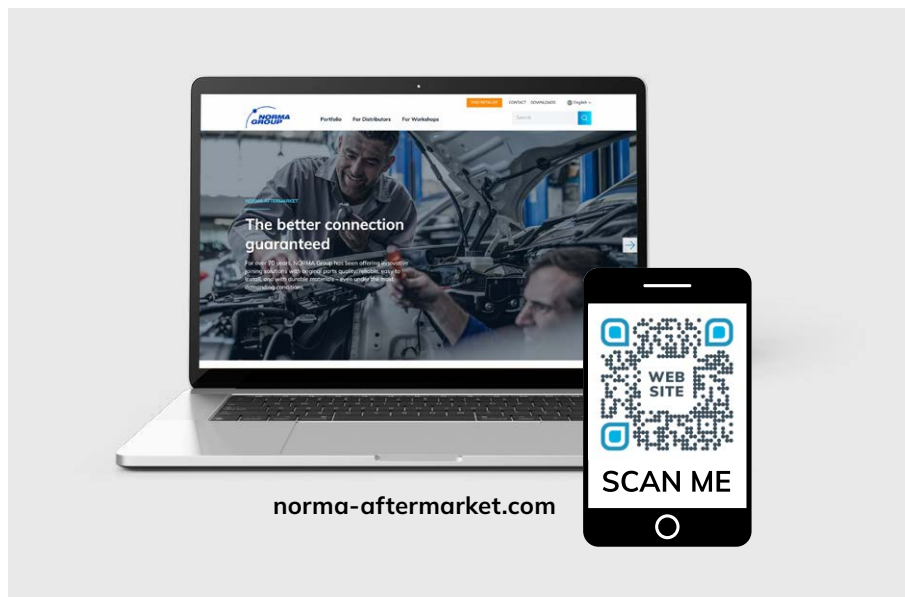
NORMA Group operates 38 distribution centers worldwide, ensuring that all our products reach every region in the shortest possible time. The distribution hub for our Automotive Aftermarket products is located in Maintal, Germany.

# The better connection guaranteed

**Innovative, original-quality joining solutions**—With more than 27,000 vehicle parts, NORMA Group provides garages with an unparalleled range of joining technology supplied by leading distributors. As an OE supplier to the automotive industry, we know what matters—be it charge air intakes, cooling systems, fuel and oil systems, exhaust systems, turbo charger connections or universal fixings. Superior quality in every detail. No compromise.

NORMA Group is a global market and technology leader in engineered joining technology, offering more than 40,000 product solutions for diverse applications (automotive, shipbuilding, aviation, infrastructure, etc.). As a listed company, NORMA Group has its headquarters in Maintal near Frankfurt/Main, with 8,500 employees serving more than 10,000 customers in over 100 countries via 38 distribution sites worldwide. In 2024, the company generated sales of more than EUR 1 billion.

## Discover more



NORMA Group Holding GmbH | Edisonstraße 4 | 63477 Maintal | Germany | [normagroup.com](https://normagroup.com)

This document supersedes all previous issues. No part of this publication may be reproduced without our prior written consent. In NORMA Group's policy of continual product improvements to meet user needs and technological developments, all models and sets listed in this folder (photographs, specifications, sizes and weights) may be upgraded or discontinued without notice and without any obligation on our part to modify tools or equipment sold previously. The recommendations for use and safety given in this folder do not replace accepted good practice or the safety related legal and regulatory provisions. References to standards implemented as of April 16, 2025 are not contractually binding.